

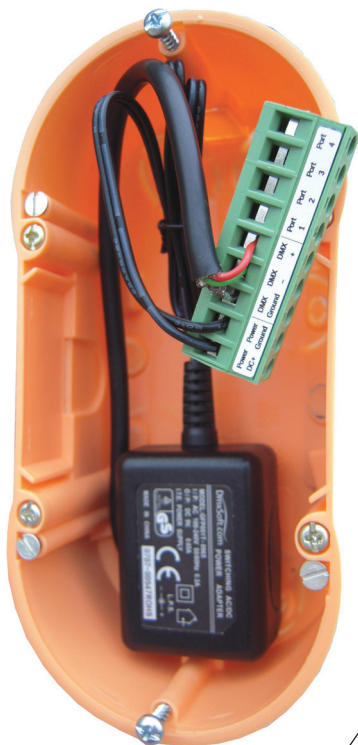
Package	Interface, sdcard, datasheet, cdrom, usb cable
Software	ESA + ESA PRO on PC/Windows, ESA2 on PC + MAC
Application	ARCOLIS + STICK REMOTE on iPhone/iPad/Android
Available colors	Frame (black or white), use the Stick Design Configurator web site
Options	Dedicated remote control (*), Power supply (*)
Standards	EC, EMC, ROHS, ETL, UL (some are in process)
Image size	Standard 150x110mm picture, contact us for a sample profile
Temperature	-10°C to 50°C
Dimensions	168x128x11,5 mm Complete package 250x150x55 mm
Weight	0,2 kg 0.44 lbs Complete package 0,6 kg 1.32 lbs

SPECIFICATIONS / CONNECTIONS		Built-in features	screw-terminal rear connector (9 pins)	extension socket rear connectors (2x10 pins)	front access connections (open cover)
Power Supply	9V DC 0.65A, supplied		•		USB
DMX Output #1	First universe, 512 channels DMX512 output		•	•	
DMX Output #2	Second universe, 512 channels DMX512 output (*)			•	
USB	USB 2.0 communication for PC/software				•
Ethernet	Advanced networking features	•			
Ports 1,2,3,4	4 Contact closure inputs, connect to ground for operating		•	•	
Ports 5,6,7,8	4 Contact closure inputs, connect to ground for operating			•	
User interface	14 buttons, 1 fader, 28 leds (Touch-sensitive keypad)	•			power/data leds
SDCARD	Micro sd card for stand alone memory use (supplied)				•
RESET	Push button for reset operation				•
RS232	RS232 Serial communication for external synchronisation			•	
Output relay	Automatic Stand by 5V signal			•	
Clock	Real time clock and calendar, 10 minutes saving without power	•			
Infrared receiver	Easy learning triggering from any 36Khz remote control	•			

EASY INSTALLATION

1. Mount an electrical box inside the wall

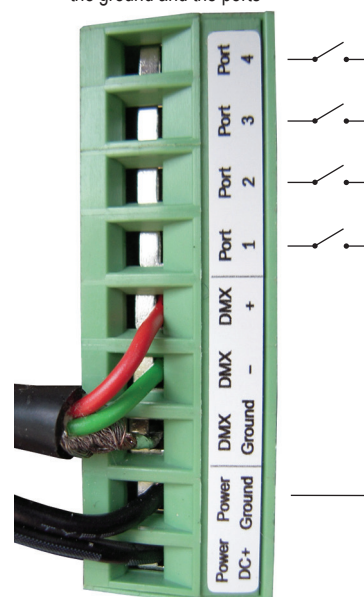
The S.T.I.C.K. controller can be installed in any standard electrical backbox. If you use a double size box, you can insert the power supply inside.



2. Connect the wires

DMX: Connect the DMX cable to the lighting receivers (Leds, Dimmers, Fixtures..) (for XLR: 1=ground 2=dmx- 3=dmx+)

POWER: Connect a 9V DC 0.65A. Be sure to not invert the + and the ground.

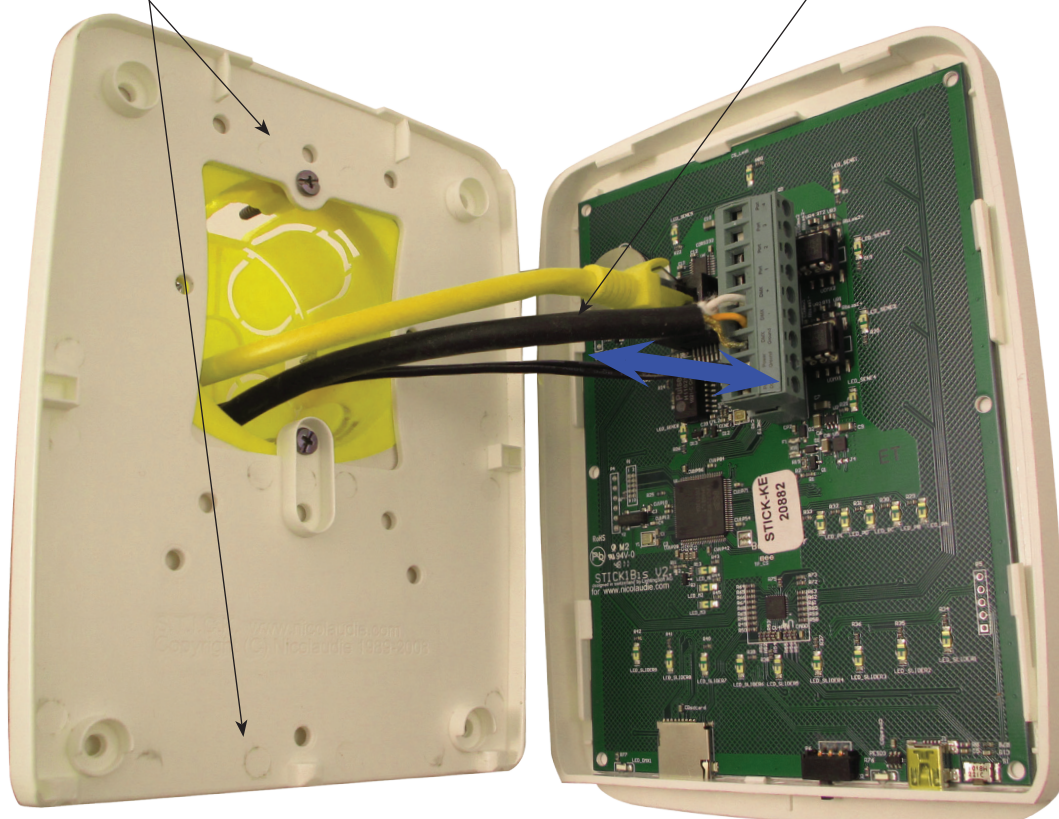


3. Mount the interface on the wall

First, mount the back side of the interface on the wall with 2 or more screws

Secondly, plug the 2 connectors (see blue arrow)

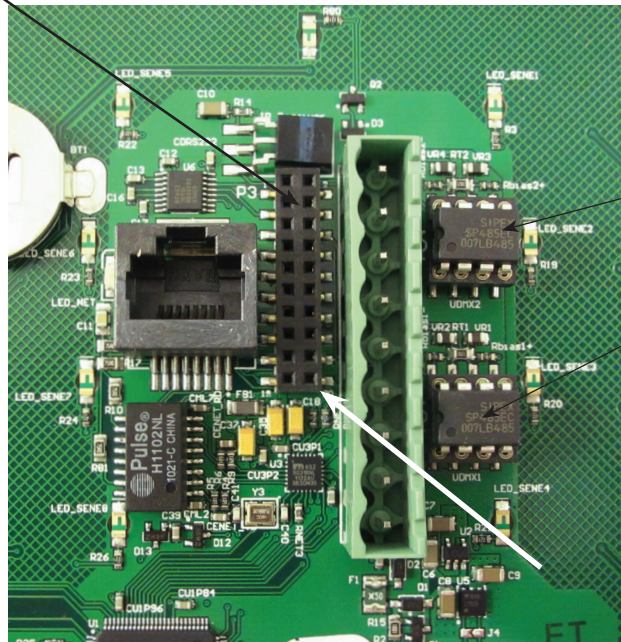
Then, close the interface, using one screw



2x10 pins EXTENSION connector

	P3		
RS232 TX	1	2	GND_DMX
RS232 RX	3	4	DMX1-
PORT7	5	6	DMX1+
PORT6	7	8	DMX2-
PORT5	9	10	DMX2+
PORT4	11	12	Relay
PORT3	13	14	3.3V
PORT2	15	16	IR_RX
PORT1	17	18	GND
PORT0	19	20	VIN

Compatible connectors:
 WURTH ELEKTRONIK ref: 61301021121
 MOLEX ref: 10-89-7202
 TE Connectivity ref: 1-87227-0
 FCI ref: 77313-101-20LF
 HARWIN ref: M20-9981046
 SAMTEC ref: TSW-110-xx-T-D
 FARNELL ref: 1841232
 RS ref: 763-6754 673-7534 251-8165
 MOUSER ref: 538-10-89-7202
 DIGIKEY ref: WM26820-ND



You can easily replace DMX CHIPS

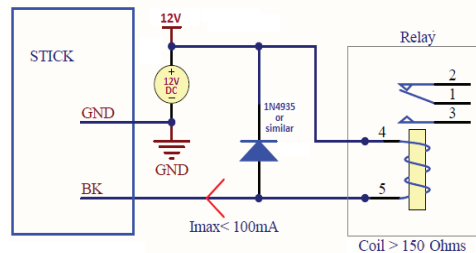
DMX universe #2

DMX universe #1

Ref:
 SP485ECP-L
 MAX485CPA+

PORTS 1 to 8 make contacts between G (GND) and P1..P8

BLACKOUT relay (energy save) using the 2 pins : BK and G (GND)



Example of relay : FINDER
 Ref. 22.23.9.012.4000
<http://www.findernet.com/fr/products/profiles.php?serie=22&lang=en>

RS232 triggering

Make a cable using the 3 pins : TX, RX and G (GND)

Set the RS232 parameters to : 9600bds 8 bits, no Parity, 2 Stop bits

- To play a scene, send 3 bytes : **1 x 255** (x = scene number)
- To stop a scene, send 3 bytes : **2 x 255** (x = scene number)
- To pause a scene, send 3 bytes : **3 x 255** (x = scene number)
- To release a pause, send 3 bytes : **4 x 255** (x = scene number)
- To reset a scene, send 3 bytes : **5 x 255** (x = scene number)

Note: the scene number (x) can be from 1 to 40. For instance, 11 means Page B Scene #3

SOFTWARE and LINKS

ARCOLIS software (iPhone/iPad)
 ARCOLIS software (Android)

<http://itunes.apple.com/en/app/arcolis/id495161115?mt=8>
<https://play.google.com/store/search?q=arcolis>

ESA, ESAPRO software (Windows)
 ESA2 software (Windows, Mac)
 ESA, ESAPRO manuals

www.nicolaudie.com (-> Support -> Downloads)
www.nicolaudie.com (-> Support -> Downloads)
www.nicolaudie.com/manuals.php

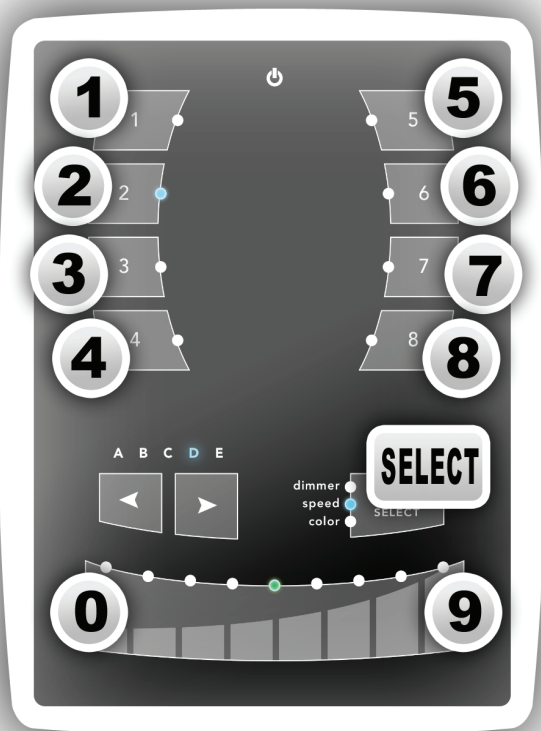
STICK REMOTE
 Remote application for iPhone/iPad, Android, Windows

www.lightingsoft.com


Driver, Firmware, Tools
 STICK Forum
 STICK design configurator

www.nicolaudie.com/hardware.php
www.nicolaudie.com/forum_support
www.nicolaudie.com/stick_config

Some functions are available directly from the STICK keypad using the SELECT button.




! WARNING


 = 3:30pm

3:30pm = 15:30

15:30 = **1530**

 = 5 DEC 2008

5 DEC 2008 = **051208**

SELECT + 1	View time	<p>Example : view 2:45pm = 14:45 = 1445</p> <p>1445 = 2:45pm (USA) or 14:45 (Europe)</p>
SELECT + 2	View date	<p>Example : view 6 SEP. 2009 date = 060909</p> <p>060909 = September 6th 2009</p>
SELECT + 3	Set time	<p>Example : set 3:30pm = 15:30 = 1530</p> <p>1 5 3 0 = 1530</p>
SELECT + 4	Set date	<p>Example : set 5 DEC 2008 date = 051230</p> <p>0 5 1 2 0 8 = 051208</p>
SELECT + 5	Set Fade time	<p>Example : set 01'32" fade time = 1 minute and 32 seconds = 0132</p> <p>0 1 3 2 = 0132</p>
SELECT + 9	Set IR	<p>Example : assign an IR key to Scene #2</p> <p>2 + </p>
SELECT + 0	Firmware version	<p>Example : view 1.02 firmware version = 0102</p> <p>0102 = firmware version 1.02</p>