



Feature

- E4R is an popular size in Ecowhite series with high lumen output and economic cost
- The high-grade optical diffuser and multi- aceted reflector provide softer light for more appealing interiors. Glare cut-off 25°; UGR<19
- Different mounted ring and reflector styles are optional to fulfill different aesthetic design requirements.
- Lumen Range: 800-1700 Lm ; Wattage Range: 8-22W; eam Angle:60°

Material

- Fixture: Die-cast Aluminium (Mounted ring color: matt white)
- Diffuser: high grade PMMA (No yellowing in 30 years);
- Reflector: Aluminium with high reflective AL plating
- Weight: 690g

Benefit

- Replace 26W,32W,2*18W CFL downlight with 50% energy saving
- Replace 35W HID downlight with 30-50% energy saving

Application

- Office lighting, shop lighting, corridor lighting

MOUNTED RING STYLE



Stylish ring



Standard



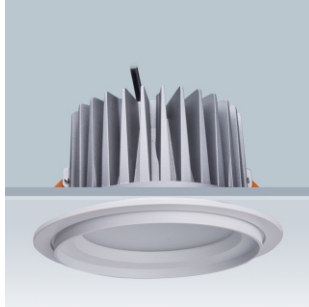
Flush ring

OPTION



Emergency Kit

E4F LED Downlight



E4F LED Downlight Series
With external driver (*Dimmable or Non-Dimmable*)
Lumen output: 800-1500lm

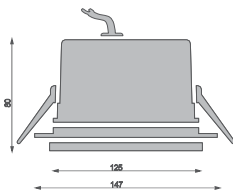
STANDARD MODEL

Product Code	Lumen output	Led power	System power	CCT	CRI	LED
LED-EVOE4F-3K	1300 lm	15 W	18 W	3000K	83	Samsung
LED-EVOE4F-4k	1300 lm	15 W	18 W	4000K	83	Samsung
LED-EVOE4F-5K	1300 lm	15 W	18 W	5000K	83	Samsung

Efficiency: 72 lm/W

Life time: 50,000 hours (70% Lumen maintenance)

3 Years Guarantee



E4F-135-830

